

## Ground-mounted 4 Legs System



### 1. 4 legs mounting system profile

Chiko 4 legs ground mounting systems are designed in order to provide a standard mounting solution, suitable for any system size, and suit for most landscape situation, such as ground screw, concrete foundation or concrete footer.

System layout and design depend on detailed analysis of the respective area in order to gather the necessary information for wind and snow load as well as soil composition.



#### Specification:

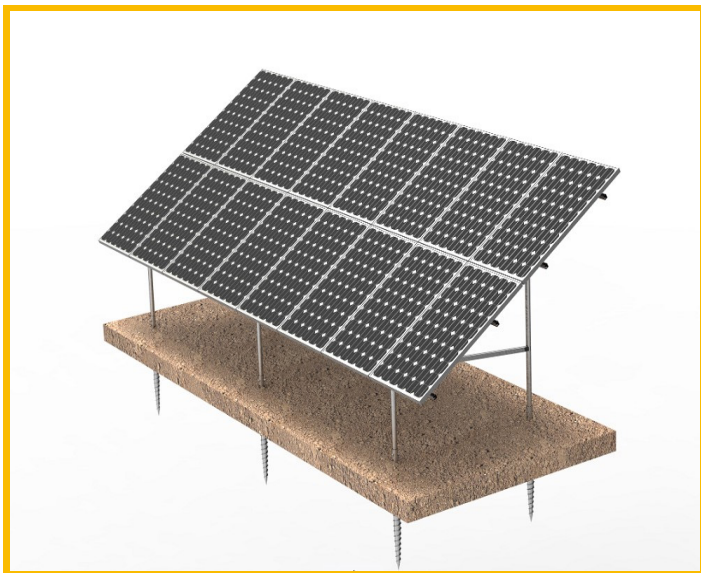
Installation Site:	open filed
Wind Load:	<60m/s
Snow Load:	<1.4KN/m <sup>2</sup>
System Tilt Angle:	10deg-45deg
Applicable Module:	Framed or thin film
Module mounting:	portrait or landscape
System Material:	Steel hot-dip galvanized
Foundation:	concrete base
Warranty:	10 years warranty and 20 years service life

## Features and benefits:

Ground mount system IV product enhancements. Special angle available, 30deg is most popular and standard.

- Valuable installation time is saved, smart connect plate, make the installation in easy.
  - Fix foot to foundation.
  - Fix the connect plate.
  - Insert the connect beam between two feet.
  - Install the rail ----that is it
  - Fix the solar panels---then all done.
- For all kind of module including thin film modules, clamps are available.
- Module mounting can be in portrait or landscape, usually in portrait.
- All material support structure are in hot-dip galvanized with G235B (Q235B)
- clamps: stainless steel 304 and Aluminium alloy 6005 T5
- Individual system design calculation based on regional load available

## 4 Legs Mounting system show:



## Experience that pays

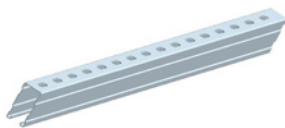
Chiko Solar or your local Chiko Solar partner individually match all kinds of the solar modules and installation situation to ensure that you get the ideal system to meet your requirements. All of our sales partners have a considerable amount of expertise and many years of experience in solar technology and have been personally chosen by us according to the strictest quality criteria.

## 2. Tools required

- Tape measure or other type measurer
- Open-ended spanner set 9, 10, 17, 19 mm
- 6 mm Allen key
- Torque Wrench
- Spirit level or plumb or other relevant tool
- Rubber hammer



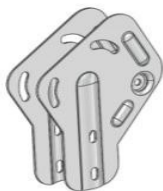
## 3. Overview of the components



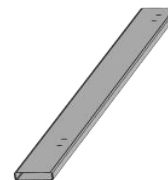
Rail 3100mm/4200mm



Rail connector kit



Connecting plates



Connect beam



U clamp SUS304



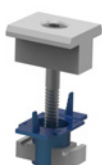
Chiko pipe



Ground screw



Clamp

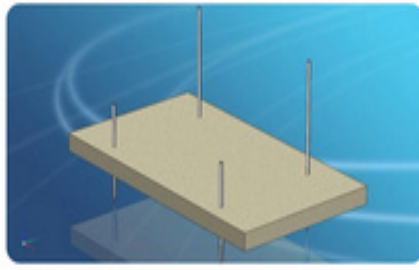
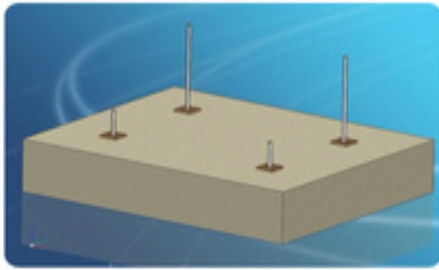


Module middle clamp set  
(pre-assembled)



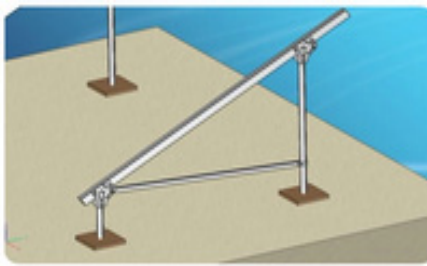
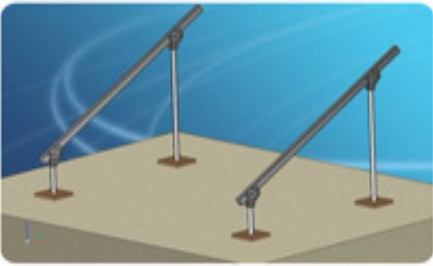
Module end clamp set  
(pre-assembled)

## 4. Assembly step by step



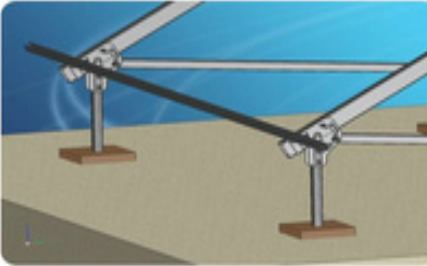
1

Pre-assemble expand bolts or ground screw or concrete footer



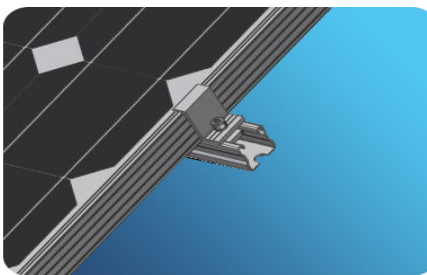
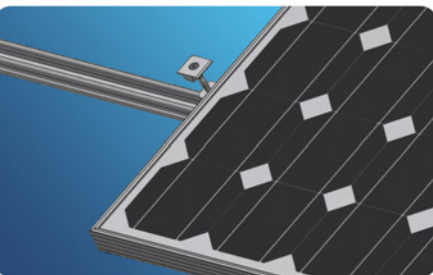
2

Fix the connect beam between two legs, the small square pipe as well



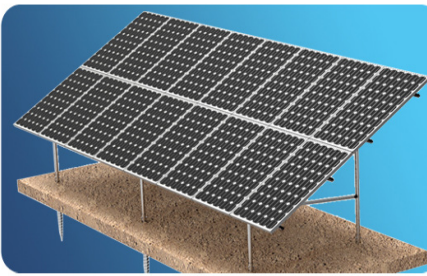
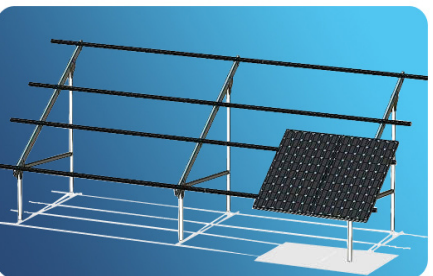
3

Fix rail onto support structure



4

Fix solar panel on structure via mid and end clamps



5

Finish all array job